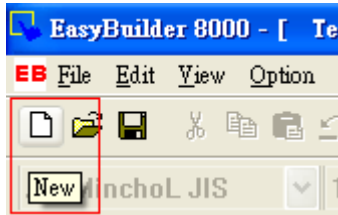


Chapter 3 Easy to using of EB8000

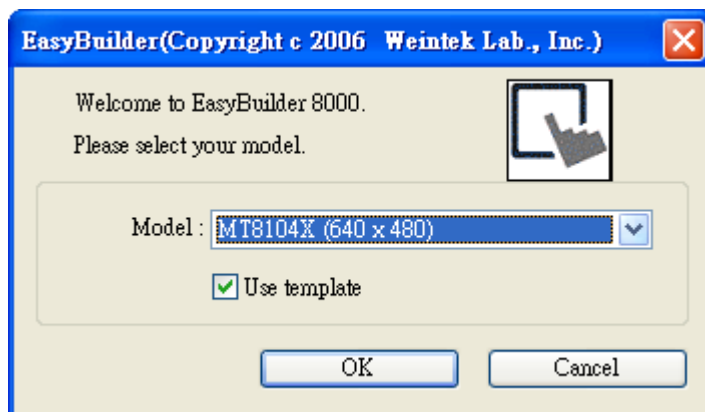
The follow has an example to illustrate with how to create a simple project, compile, simulation on PC, and download to HMI.

1. Create project

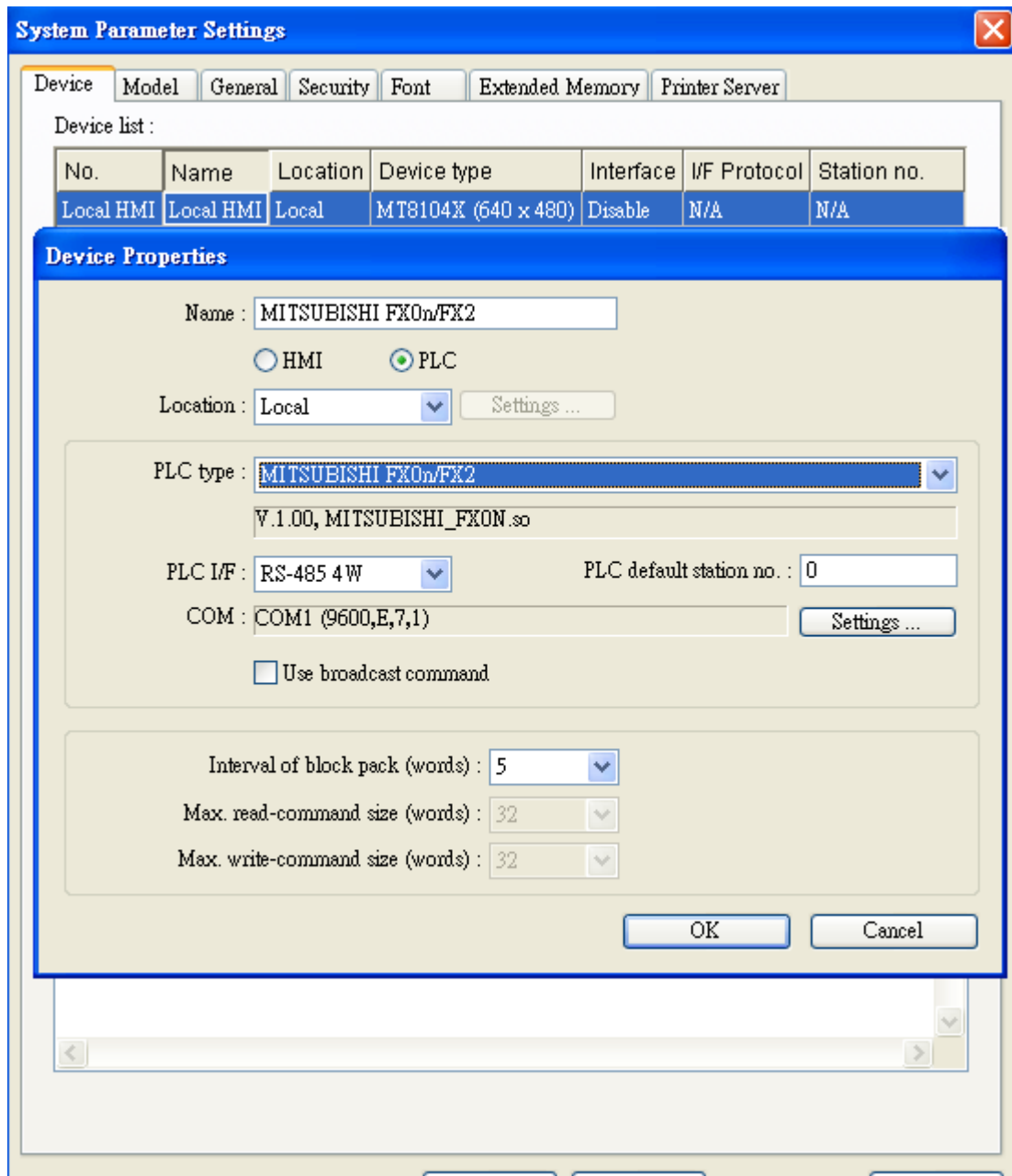
First of all, click [New] icon on the toolbar to create a new blank project as below:



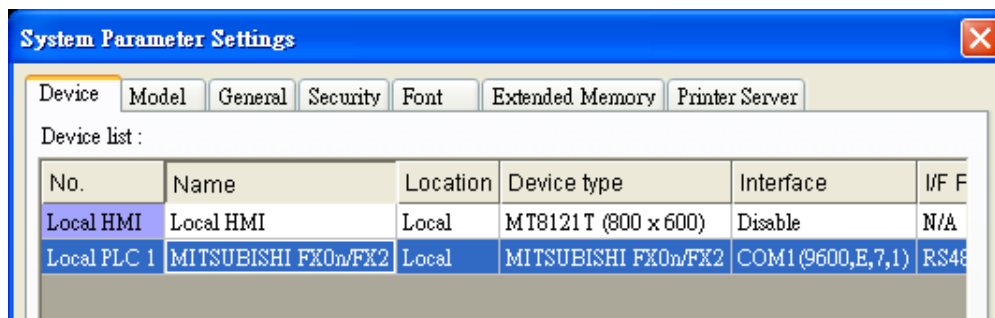
Select HMI Model and check Use template and then click OK.



It must correctly setting the system parameters, click [New...] function on Device Table to add a new device. The example of settings as below:



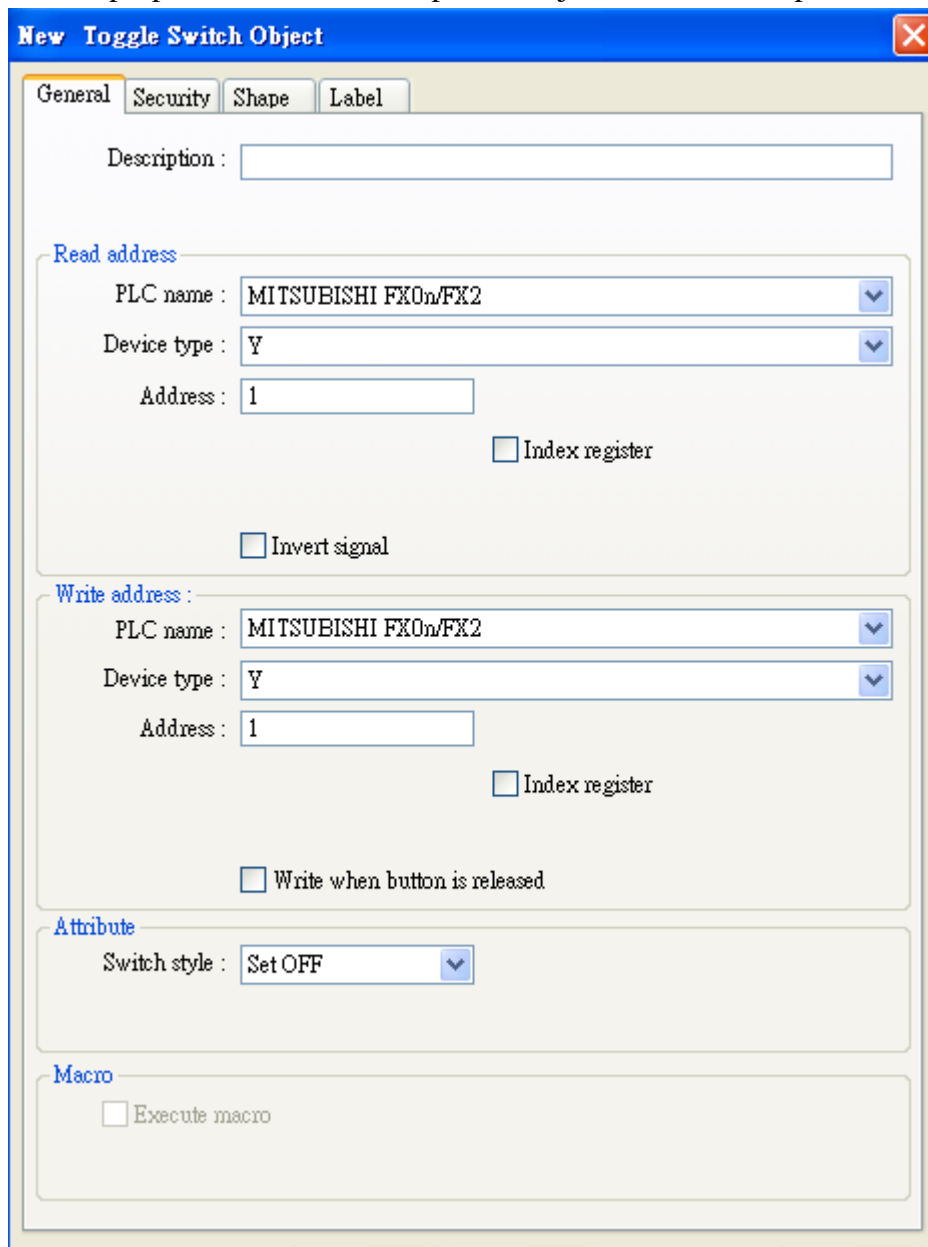
Device “MISUBISHI FX0n/FX2” is added to the Device Table after click OK.



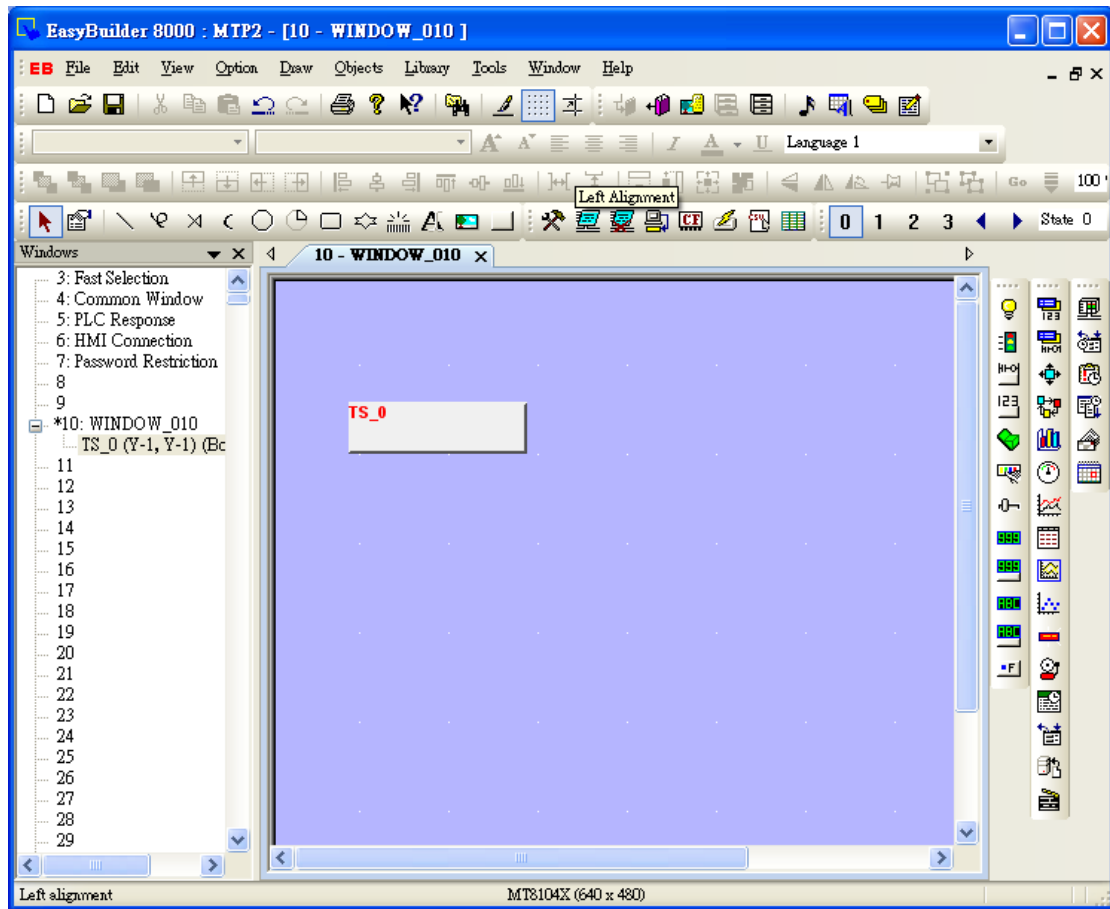
Now, user can create a very simple project, such as Toggle Switch object. Click the object button show as follow.



New Toggle Switch Object dialog display as the illustration. After correctly settings each of properties, click OK and put the object to the desired place.



Finished window 10 is as below and a simple project is completed.

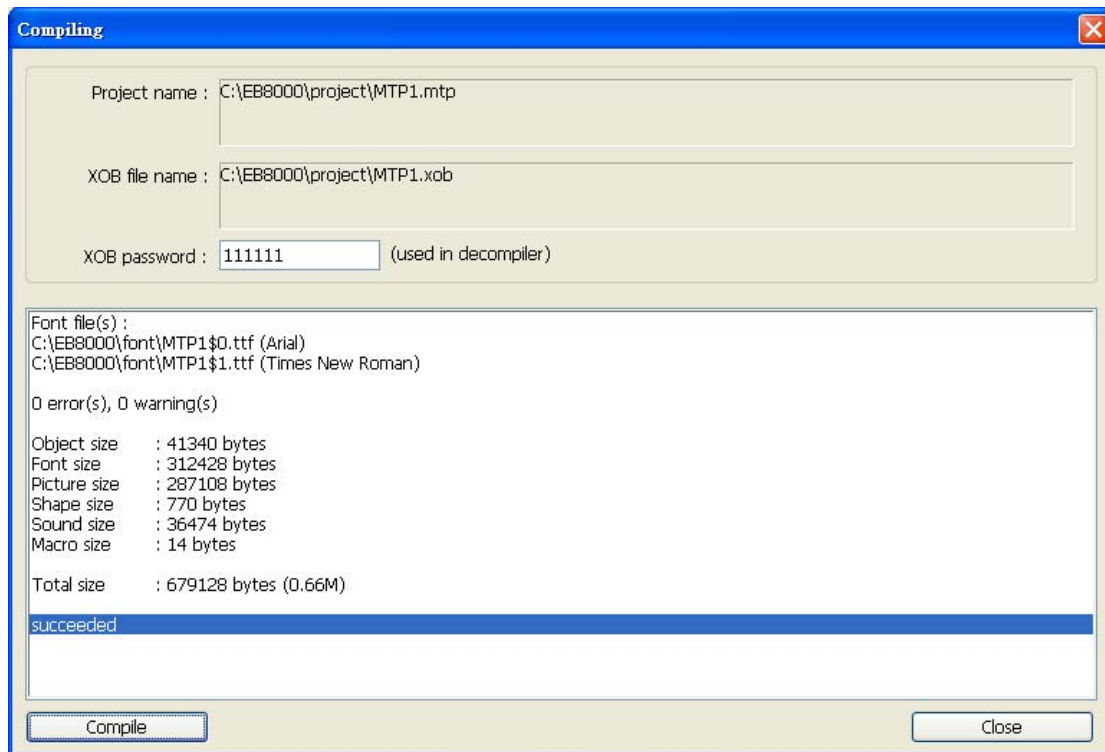


2. Compile project

After the .mtp file is saved, user can select [**Compile**] function icon to examine if the screen configuration is correct, and then obtain .xob file.



If the compiling result shows as below which means no error exists.



3. Simulation on PC

There are two simulation ways: Off-line simulation & On-line simulation. By virtual device, PC simulates the operations of PLC without connecting to PLC. On the contrary, On-line simulation is executed by connecting with PLC and accurately setting the communication parameters. When simulating on PC, if the control target is a local PLC (i.e. the PLC directly connected to PC), there's a **10 minutes simulative limit**.

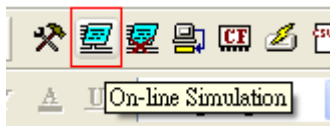
Click the icon to execute the Off-line Simulation.



The follow screen is that after executing the off-line simulation:



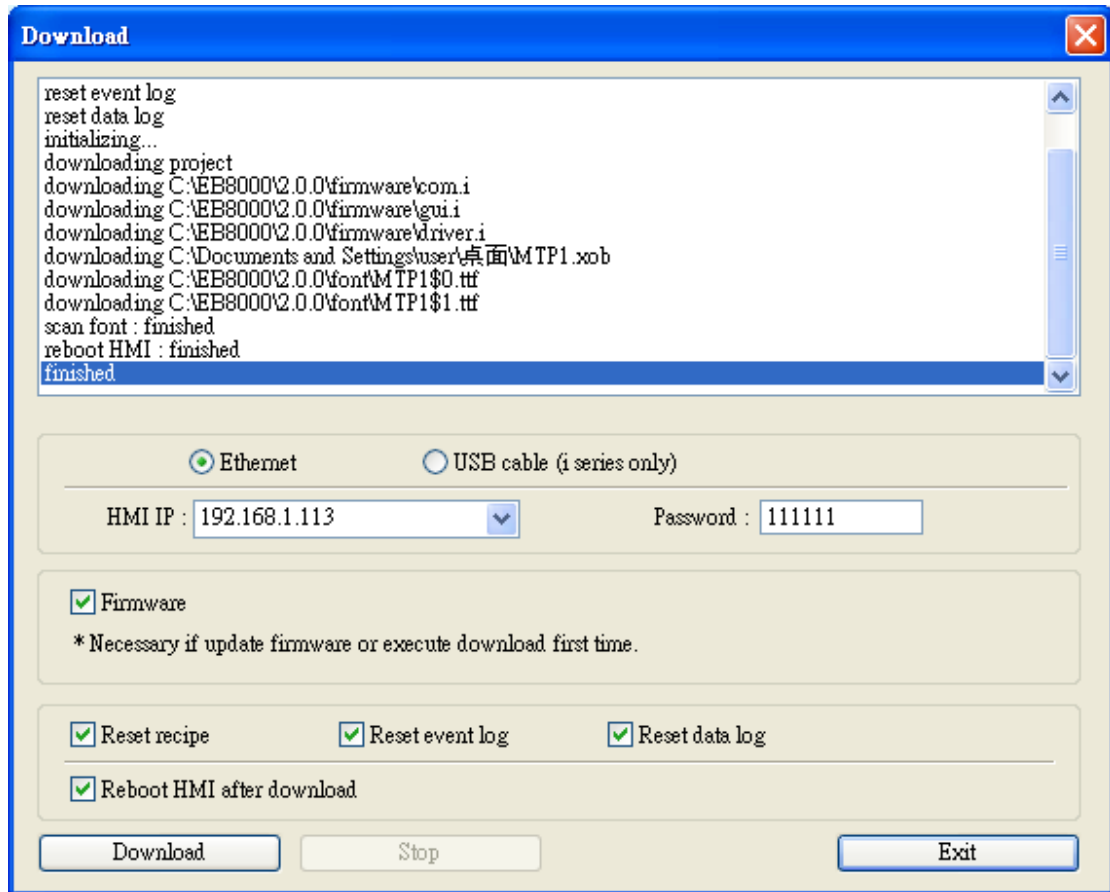
If want to execute On-line Simulation, click the icon for processing after correct connecting the device.



4. Download project

Click [Download] icon from tool bar of the EB8000 and [Download] dialog display as below:





HMI IP	Assign the download target IP
Password	Input password. Please refer to the related chapter
Firmware	It's necessary if update firmware or execute download first time
Reset recipe	If the each function is selected, the files will be erased before download
Reset event log	
Reset data log	
Reboot HMI after download	If the function is selected, HMI will reboots after download is done

Click Download button to start downloading operation.